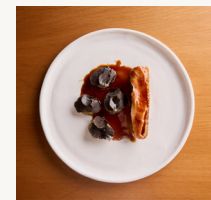


Event Spaces

The Hotel Britomart



A modern retreat in the heart of the waterfront

When you're hosting a celebration, a cocktail evening, a conference or meeting, a wedding or elopement, a special family occasion or a corporate launch, The Hotel Britomart has a beautiful event space for you, set in the heart of downtown Auckland's most vibrant neighbourhood.

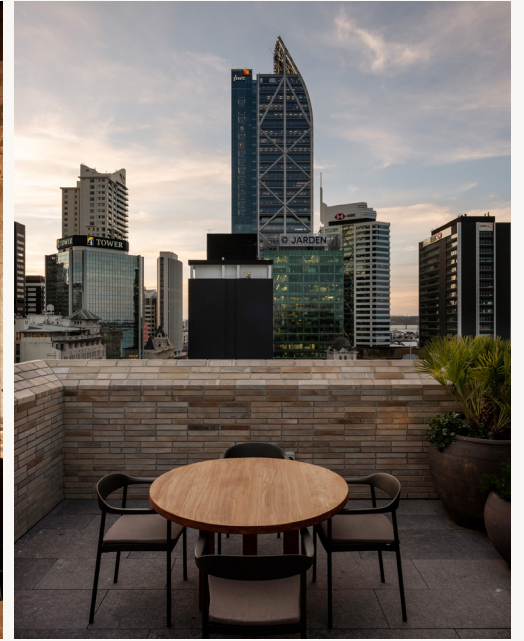
Our friendly event production and skilled culinary and beverage teams will work hand-in-hand with you to craft an unforgettable experience, with every detail attended to.

Sustainability is inherent in everything we do and is subtly woven into the design of our spaces, our product and produce sourcing, and our amenities.

The Hotel Britomart was awarded #1 hotel in New Zealand by Tripadvisor in the 2023 Travelers' Choice Best of the Best Awards and Best Hotel in the 2024 Hospitality NZ Awards for Excellence.

Our events team would love to create a bespoke event for you and your guests, with the signature level of care we bring to everything we do.





Sustainable events at The Hotel Britomart

Sustainability is built into our design and day-to-day operation. As a 5 Green Star hotel and a Toitu Carbonreduce organisation, the beautiful event spaces, meeting spaces and guest rooms we offer give your business peace of mind when it comes to health, comfort, sustainable business practices and energy-efficiency.

KEY SUSTAINABILITY FEATURES

- Energy-efficient LED lighting
- 4/5 WELS (water-saving) taps, showers and toilets
- Heritage re-use and sustainable building materials
- 95% local food, beverage and product supply chains
- Refillable, locally made restroom amenities
- Social good and plastic-free procurement policies
- Organic cotton linen in guest rooms and Landing Suites
- Green Clean Policy to reduce water use from over-laundering
- Multiple waste streams for effective recycling and waste minimisation
- AV and high-speed internet facilities available for hybrid meetings
- Company culture of care for team and community

TREE PLANTING COLLABORATION AT THE LANDING

For every 10 attendees at your meeting or event, we will plant one native tree on your behalf at our sister property, The Landing, in the Bay of Islands to contribute towards carbon offsetting. The Landing is a 400-hectare heritage property where over 1.2 million native trees and wetland plants have been restored over the last 20 years. Over 100 years, one tree will absorb around 1 tonne of carbon.



Daily Meeting Package

Your meeting space is the beautiful, light-filled Papuke Room, lined with heritage brick, century-old timbers and plants. Our signature level of sustainability is woven into every aspect of your day.

PRICE \$129 per person full day, \$119 per person half day.

CAPACITY Minimum 25 people, maximum 50.

INCLUSIONS

- Venue hire
- Arrival tea and coffee
- Morning tea (two items)*
- Working lunch
- Afternoon tea (two items)*
- Tree planting on your behalf
- Sustainably sourced pens, paper

**Choice of either morning tea or afternoon tea is included in the Half Day Daily Meeting Package.*



The Considered Choice

AN ELEVATED EXPERIENCE FOR GATHERINGS WITH PURPOSE.

A meeting or conference at The Hotel Britomart gives your guests more than just a place to gather. Our experiences are grounded in thoughtful detail, warm hospitality and a sense of purpose.

When your group stays overnight, they'll be welcomed with a complimentary cocktail hour on arrival, to give them a relaxed chance to connect and ease into the rhythm of your event. The following day begins with a smoothie before your meeting, and each guest room receives a turn-down treat on the night of your choice.

Two VIP guests can enjoy complimentary room upgrades, adding an extra touch of comfort and care. And because sustainability is at the heart of how we operate, we will plant a native tree at The Landing for every 10 guests in your group. It's our way of saying thank you for sharing our values and gives your decision to choose The Hotel Britomart a lasting impact.

Inclusions

- Complimentary Cocktail Hour on arrival night
- Complimentary room upgrade for VIP guests
- Complimentary turn-down treat for all rooms on a night of your choice
- Complimentary arrival smoothie on meeting day
- One tree planted at our sister property, The Landing, for every 10 event guests

TERMS AND CONDITIONS • Available for groups of 10 rooms or more, with a maximum of two complimentary VIP upgrades. • Minimum food and beverage spend of \$5,000.00 applies. Offer available for reservations before 31 December 2025.



The Libraries at The Hotel Britomart

Layers of history, art and design: tucked away on the first floor of the heritage Buckland Masonic Building, The Libraries at The Hotel Britomart are a series of one-of-a-kind spaces for select private functions. Each space can be hired individually or in combination.

Full buyout of The Libraries is available upon request.



- 5 The Lounge
- 6 The Wine Library
- 7 Chef's Library
- 8 The Papuke Room
- 9 Events entrance/lift

THE LOUNGE

With artworks by Ralph Hotere and Shane Cotton, and brick walls revealing layers of history, The Lounge gives cocktail function guests the chance to sink into sumptuous banquettes or gather around the beautiful stone bar.

CAPACITY 70 for cocktail, 18 seated.



THE WINE LIBRARY

The loft-like Wine Library is lined floor to ceiling with bottle shelves and lit by a chandelier of hand-crafted glass. Its central kauri slab table is the focus of wine tastings or private dinners.

CAPACITY 12 for wine-tasting, dining or boardroom.



THE CHEF'S LIBRARY

A warm, relaxed and intimate semi-private dining room, where sublime meals with matched wines are hosted course-by-course by The Libraries executive chef. The adjoining kitchen allows easy conversation with chefs as each dish is prepared and served.

CAPACITY

8 for degustation or family-style dining, six for cabaret.



THE PAPUKE ROOM

Filled with light and the textures of ancient native timber and century-old brick, The Papuke Room is a generous, flexible space that can host seated dinners, cocktail functions, presentations and meetings, with full audio-visual capability.

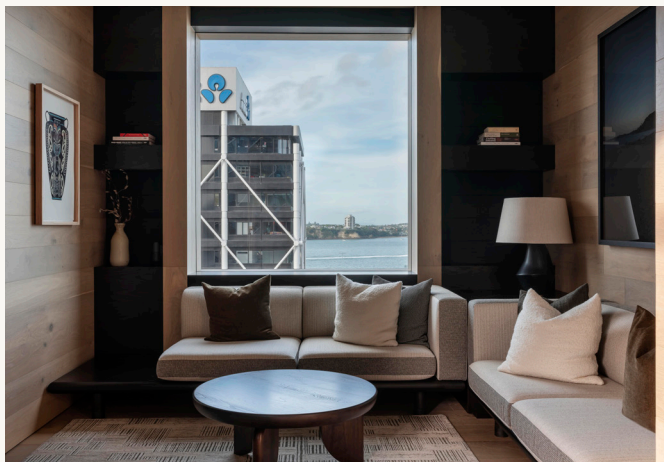
CAPACITY 50 cocktail, 50 dining, 20 boardroom, 36 cabaret, 50 theatre or 34 U-shape.



THE LANDING SUITES

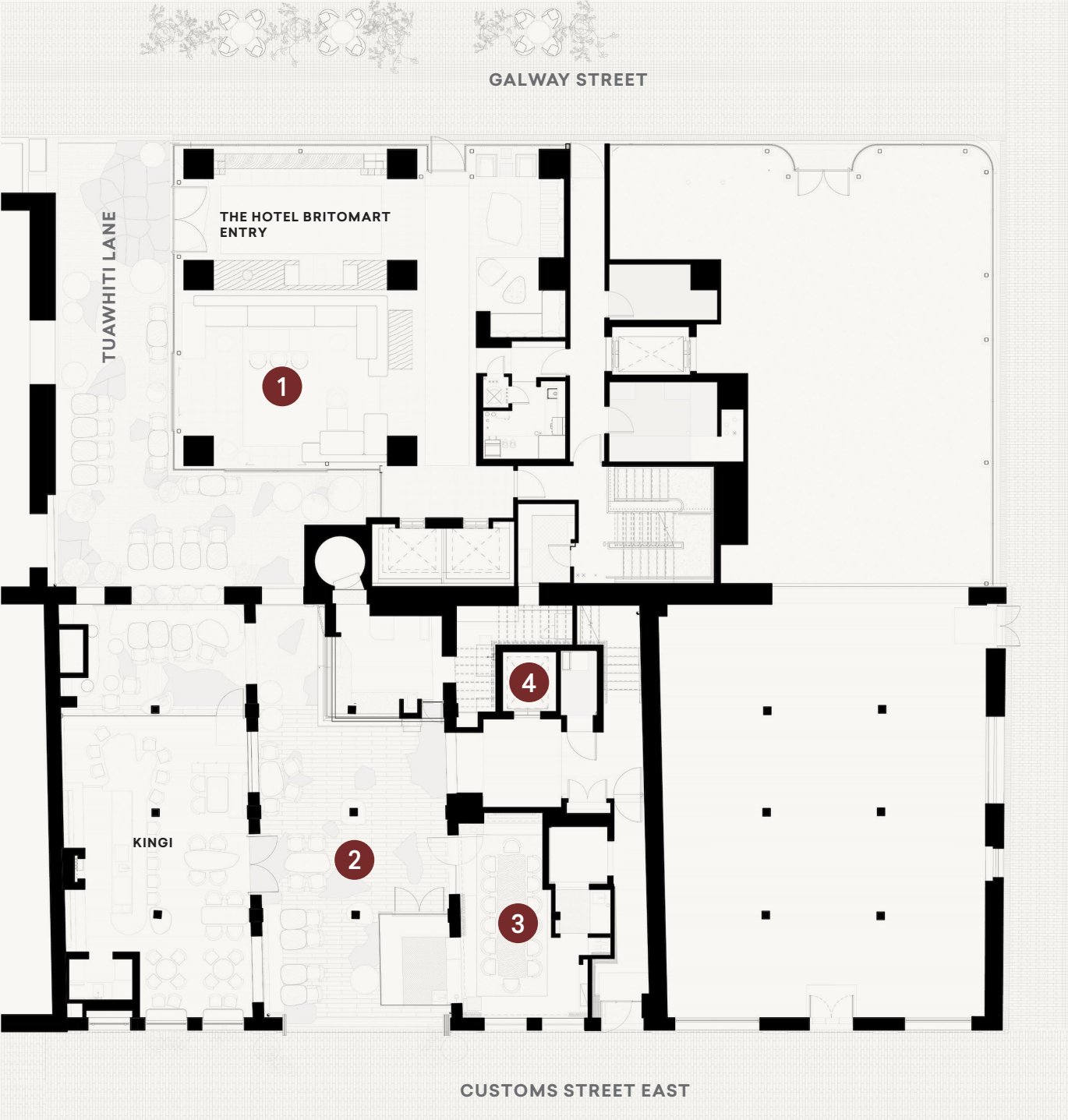
Our rooftop Landing Suites are the ultimate venue for a sophisticated cocktail soirée that captures the spirit of downtown Auckland. Three elegant suites sit on the top floor of The Hotel Britomart, while two more are located in a glassy pavilion on the roof of the adjacent heritage Buckland Building. Three of the suites feature plant-filled sky terraces with city views.

CAPACITY Minimum 15, maximum 18 guests.



The Hotel Britomart

Ground floor



GROUND FLOOR THE HOTEL BRITOMART

- 1 The Lobby Lounge
- 2 The Courtyard
- 3 kingi Private
- 4 Events entrance/lift

KINGI PRIVATE

A sophisticated private dining room adjoining the kingi courtyard, kingi Private feels like stepping into a beautiful dining room in a private home. Featuring a kauri-slab table, fish-scale chandelier and a glass-box 'larder kitchen' giving glimpses of chefs preparing food, the space also features an elegant wooden sideboard concealing audio-visual capability so the space can be used for high-end meetings, product launches and presentations.

CAPACITY

Up to 14 guests for a sit-down meal, or 12 for a catered meeting/presentation.

SIZE 40 sqm.



THE LOBBY LOUNGE

An airy, light-filled space that can be curtained off from The Hotel Britomart reception area for privacy. Lined with comfortable seating, it's the ideal space for a standing cocktail function, small product launch, networking event, tour group meet-up or meet-the-author/artist event.

CAPACITY 16 seated at two tables or 40 standing .



THE COURTYARD

A buzzy cocktail party and corporate function space on the ground floor of the heritage Buckland Masonic Building. Exposed brick walls, rustic solid wood beams and a stone floor play off against a sparkling 600-piece chandelier ceiling, elegant oyster-shell stone tables and comfortable banquette seating.

CAPACITY 30 seated or 50 standing.

